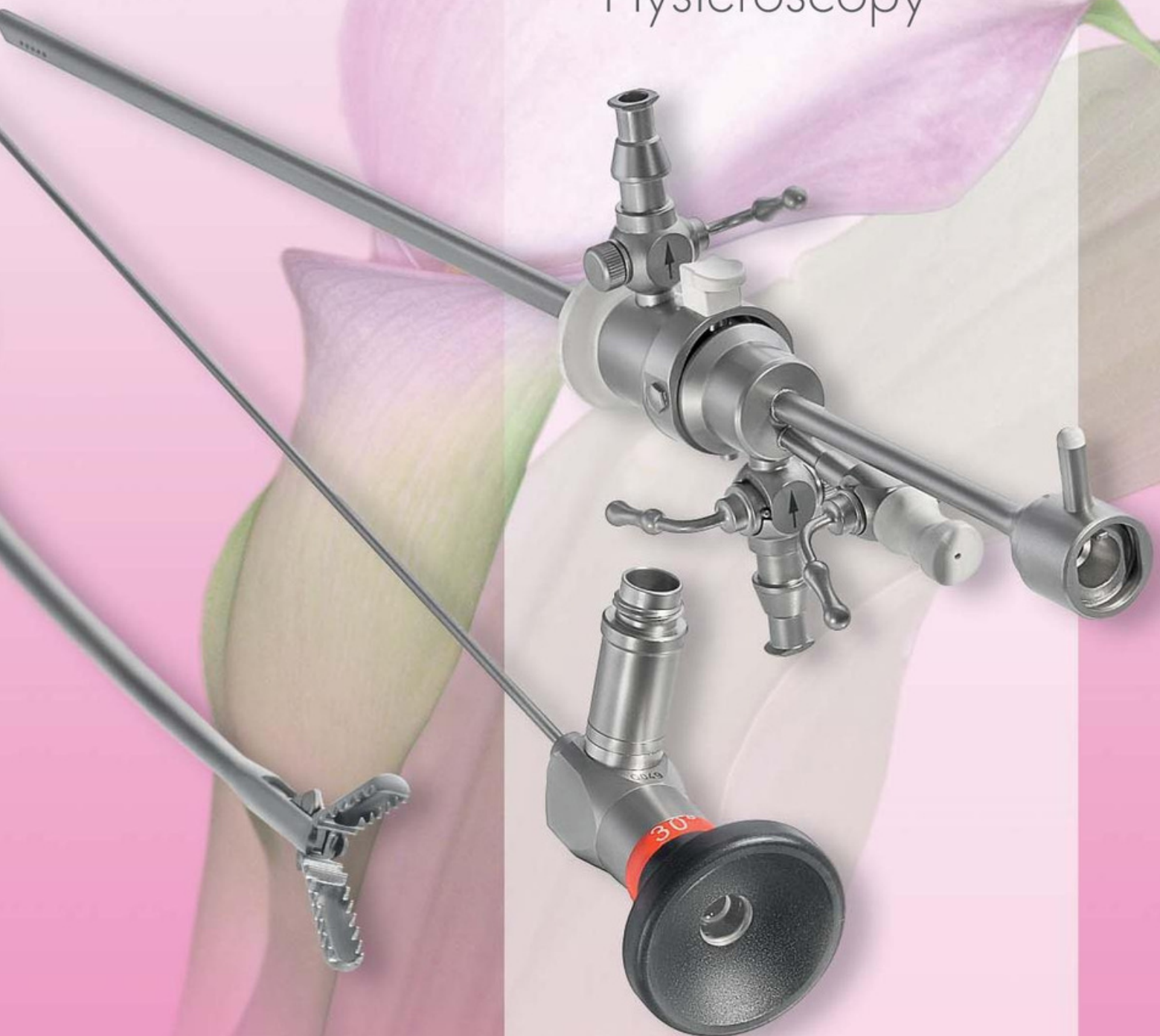


Advanced  
**MINI AND MIDI**  
Hysteroscopy



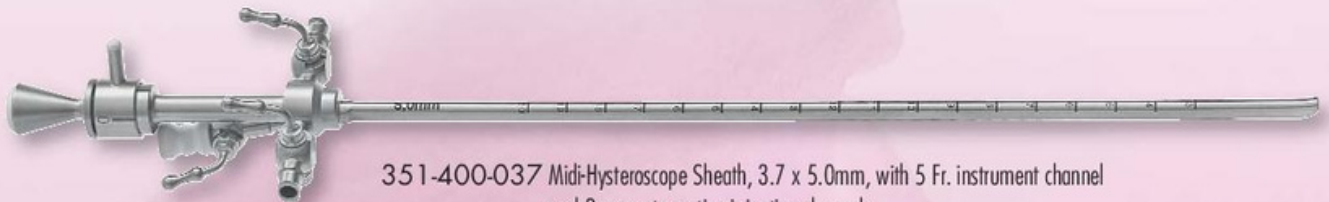
# Midi-Hysteroscopy Set (Diagnostic and Operative)



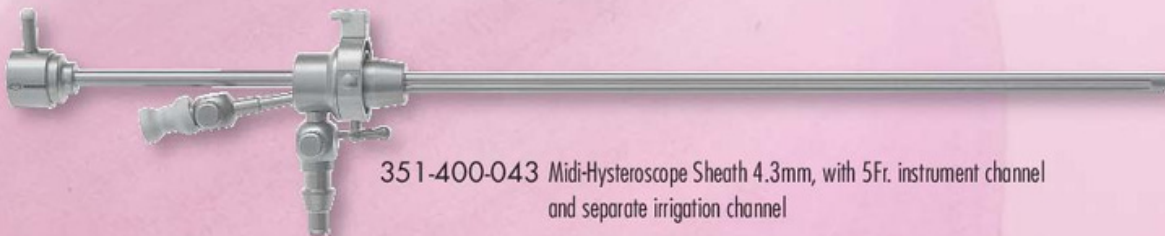
351-829-100 Semi-Flex Midi-Hysteroscope, 2.9mm  $\varnothing$ , 0°  
351-829-130 Semi-Flex Midi-Hysteroscope, 2.9mm  $\varnothing$ , 30°



351-230-040 Midi-Hysteroscope Sheath, 4.0mm  $\varnothing$ , with rotating stopcock and distance guide



351-400-037 Midi-Hysteroscope Sheath, 3.7 x 5.0mm, with 5 Fr. instrument channel and 2 separate suction-irrigation channels



351-400-043 Midi-Hysteroscope Sheath 4.3mm, with 5Fr. instrument channel and separate irrigation channel



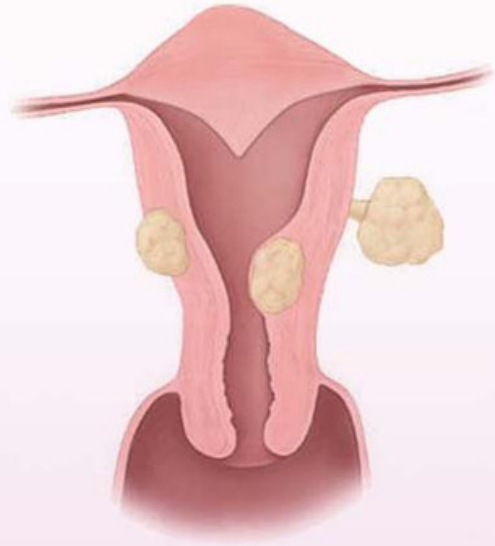
351-400-050 Midi-Hysteroscope Outer Sheath 5.0mm, for continuous suction-irrigation in combination with 351-400-043

HYSTEROSCOPY

For many years Hysteroscopy was not the first-choice procedure for Gynaecologists as instruments had a big diameter and a painful dilation of the cervical channel was necessary.

Now, RZ Medizintechnik GmbH offers a Mini-Diagnostic Hysteroscope Set as well as a Midi-Diagnostic & Midi-Operative Hysteroscope Set.

Our Real Semi-Flex Hysteroscopes ensure a long life-time of smallest endoscopes, making Hysteroscopy a fast, safe and cost-effective procedure in Gynaecology.



## Mini-Diagnostic Hysteroscope Set



351-720-000 Semi-Flex Mini-Hysteroscope, 2.0mm  $\varnothing$ , 0°  
351-720-030 Semi-Flex Mini-Hysteroscope, 2.0mm  $\varnothing$ , 30°



351-720-500 Mini-Diagnostic Sheath, 3.0mm  $\varnothing$ , with channel for irrigation and CO<sub>2</sub> insufflation, for use with 2.0mm Mini-Hysteroscopes

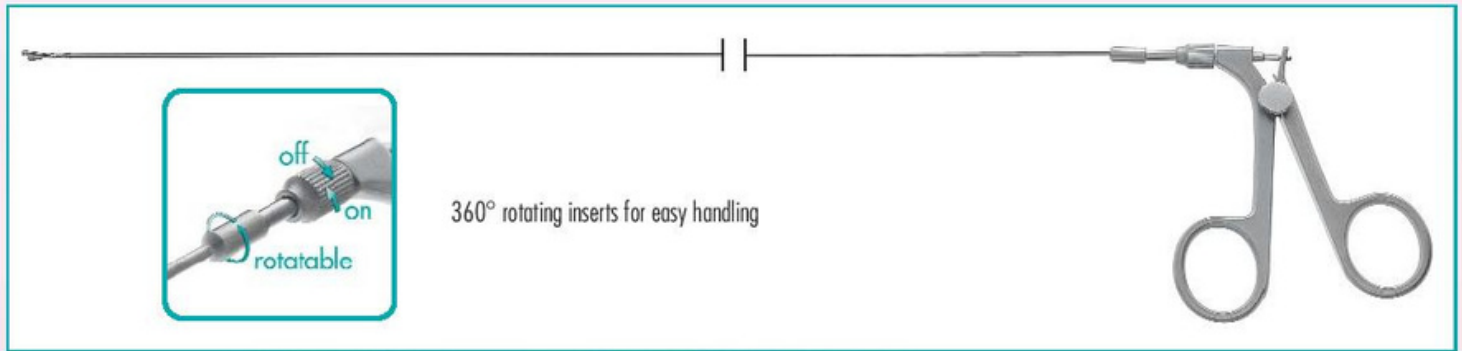


351-720-600 Mini-Diagnostic Outer Sheath, 3.8mm  $\varnothing$ , for continuous suction-irrigation in combination with 351-720-500



MINI AND MIDI

# 5 Fr. SEMI-RIGID HYSTEROSCOPY INSTRUMENTS



351-100-305	Scissors, blunt tips, single action
-------------	-------------------------------------



351-118-305	Scissors, sharp tips, single action
-------------	-------------------------------------



351-116-305	Grasping Forceps with cup, serrated, double action
-------------	--



351-120-305	Biopsy Forceps, double action
-------------	-------------------------------



351-126-305	Biopsy Punch Forceps, single action
-------------	-------------------------------------



351-124-105	Myom Fixation screw, flexible, hexagonal handle
-------------	---



253-370-005	Ball electrode, flexible
-------------	--------------------------



253-610-001	HF cable, 4mm plug
-------------	--------------------